

Let's start your adventure
with EXTRA.TOUCH today!

Flatoons™

Flatoons Ver 1.0

Flatoons is an interactive content with a censoring technology, a depth-censoring camera, and project mapping*.

* Capable of outputting not only projectors but also digital signage display and ordinary monitors.

EXTRA.TOUCH ①



It is simple but profound content!

It looks simple to communicate with digital characters, but it is very exciting experience to see responses from digital characters by your actions. Because of the simplicity, it can match with various types of events and we can provide the best match for you. Our high graphical technology will certainly help to aim for the best contents.

EXTRA.TOUCH ②



It can be fully customized.

From character design through UI, 2D-3D, graphics, background, items, sounds, service, # of players, and play hours, we can customize everything in basis. If you already have characters, it will be easier to develop original contents.

EXTRA.TOUCH ③



Human-sized characters.

Experience a breathtakingly exciting moment as you can communicate with human-sized characters, that would make you feel playing in a virtual reality. For projector mapping, signage, and others, many output types can be provided and your extra space will transition to an interactive space immediately.

FLATOONS Specification^{※1}

Play time	: unlimited
A number of players	: 1 (There will be an expansion)
Recommended space	: 2m by 2m (6.5ft by 6.5ft)
Projector	: 1
3D-Scanning Sensor	: 1
PC	: 1
Depth-Detecting Camera	: 1

Recommended Specification of PC

OS	: WINDOWS10 (64bit)
CPU	: Core i7-2700K The below specification is a minimum requirement.
メモリ	: 8G or above
GPU	: NVIDIA GeForce GTX 1060 6GB The below specification is a minimum requirement.

* Please use up-to-date drivers for devices

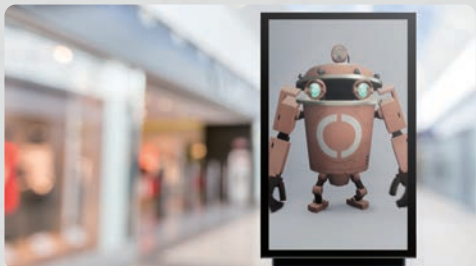
※1 :

CUSTOMIZE Specification^{※2}

ITEM	DETAILS	REMARKS
Change 3D characters	<ul style="list-style-type: none"> • A set of 3D CG modeling (including setup) • Swap animations 	It takes approximately 1 to 3 months to implement and adjust the changes, depending on your specification and basic design.
Change a design on a background.	<ul style="list-style-type: none"> • A set of 3D CG modeling • Installation and adjustment within a game 	
Change character voice and lines character speaks	<ul style="list-style-type: none"> • Change/Add lines character speaks • Add/Change/Implement/Adjust character voices 	
Any localization available	<ul style="list-style-type: none"> • English and Chinese language versions available • Change UI (speech lines, rules, etc) 	
Change a method for projection	<ul style="list-style-type: none"> • Switch front/rear projection • Switch between signage and monitor 	

※2 : Please let us know whenever you need any new design for characters or backgrounds.

SCENE^{※3}



For demonstrating in an extra space.

Extra spaces and walls around stores in shopping malls will be an amusement area for an interactive entertainment for customers. It is useful to promote your original services as well as branding your merchandize



For attracting more customers.

This service can decorate your stores, shops, or facilities, and it attracts customers to the place you set it up.



For entertaining at any event.

Human-sized characters and excitement, and original and unique contents that anyone would stop by, can be very attractive to any customers and newsworthy as a killer content in public.

※3 : Regardless of whether permanently available contents or limited editions, we are flexible to take any of your requests. Please feel free to ask.

Please contact us regarding spaces of machines, any new design/development, or any other questions.

